

# PM4220



## Permanent Magnet DC motor

The PM4220 motor is available with or without worm wheel transmission. The outgoing shaft can be customised and the motor can be equipped with a fully integrated optical encoder.

The motor can be used for various applications such as wire feeders for one-phase arc welding power sources, wipers and structural products.



SWEDEN.MADE.

# Specification

Armature diameter: 42 mm

Armature length: 20 mm

Nominal voltage: 12-42 V

Gear ratio: 50:1 (alternative gear ratios available upon request)

Speed range: 60–280 rpm

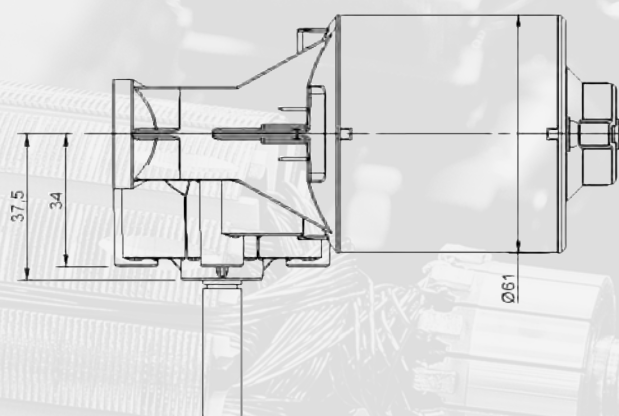
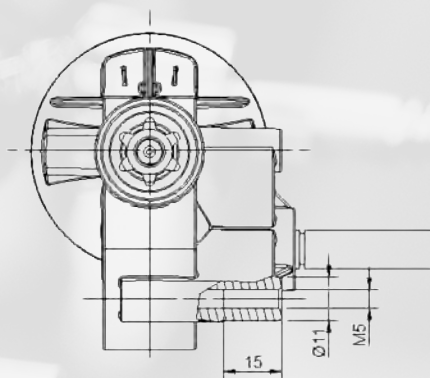
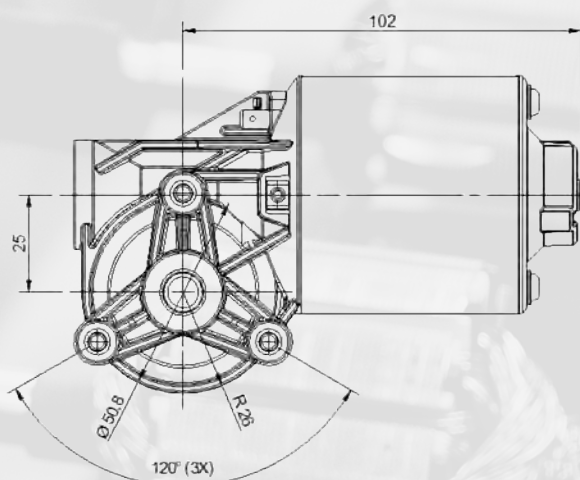
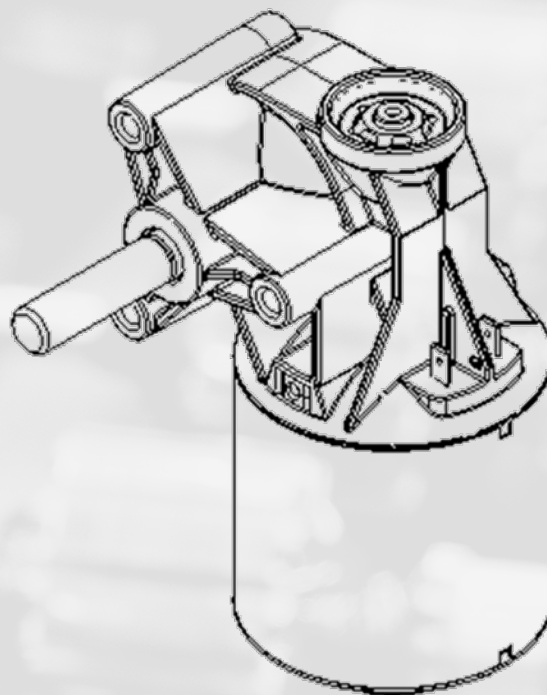
Insulation class: F

Degree of protection: IP20

Motor weight: 0,7 kg

Shaft orientation: Left / Right

Optional encoder: 37 / 60 cpr



SWEDEN.MADE.