

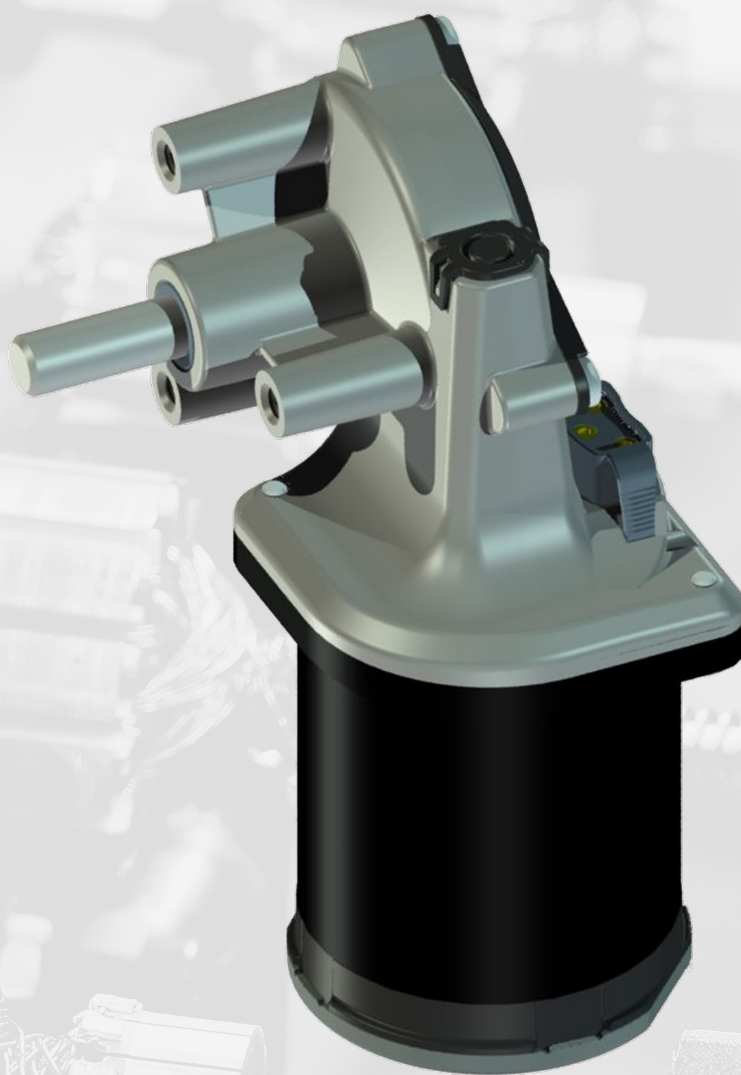
# BL5440 IR



## Brushless DC Inner Rotor motor

The BL5440 IR motor is available with or without worm wheel transmission. A brushless motor offer several advantages such as higher efficiency, longer lifespan, and reduced maintenance. The outgoing shaft can be customised and the motor is equipped with an optical encoder or hall effect sensors.

The motor can be used for various applications such as wire feeders for three-phase arc welding power sources, agricultural equipment and within the automotive industry.



SWEDEN.MADE.

# Specification

Stator diameter: 54 mm

Stator length: 40 mm

Nominal voltage: 12-42 V

Gear ratio: 21:1 / 24:1 / 37.5:1 / 69:1

Max speed range: 87– 285 rpm

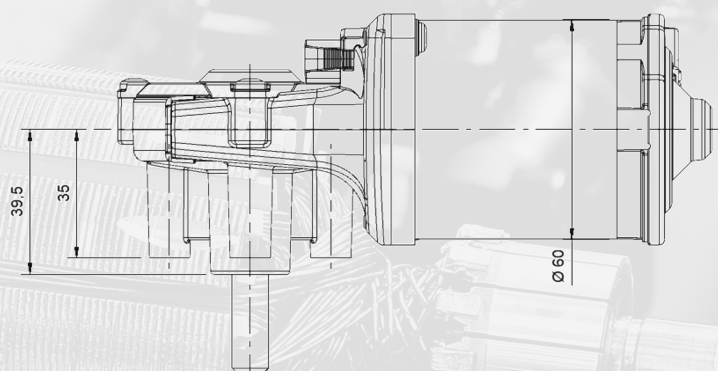
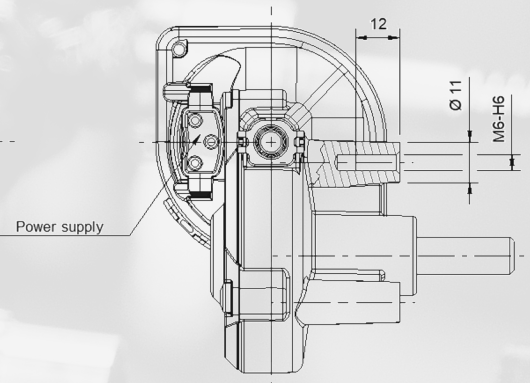
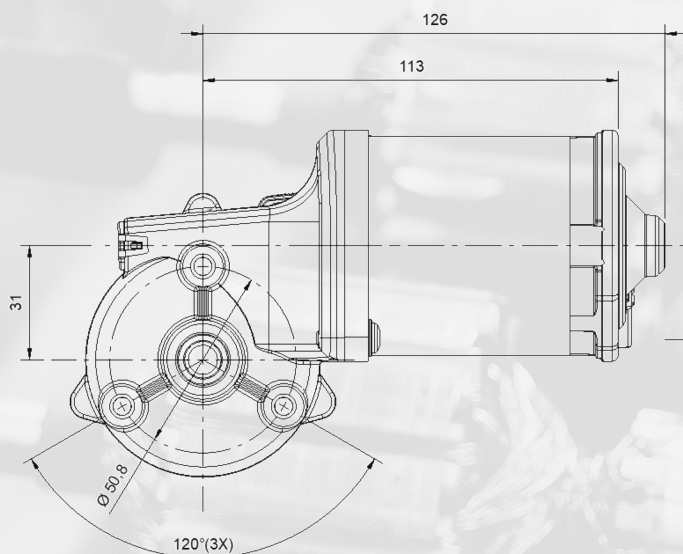
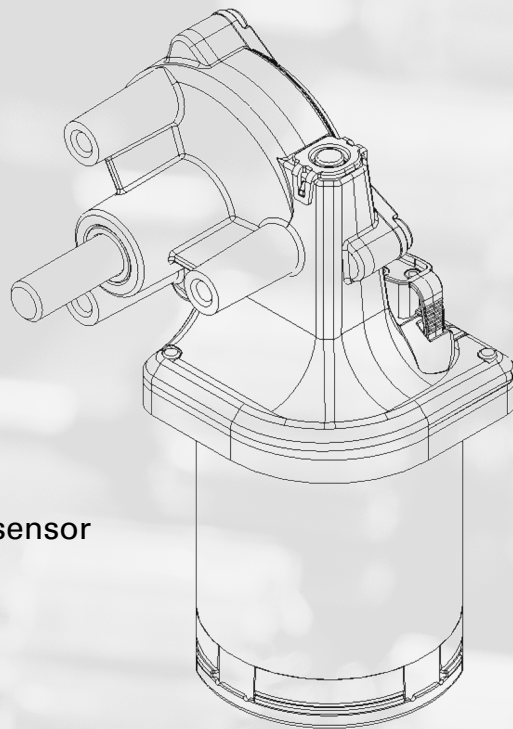
Degree of protection: IP20

Insulation class: F

Motor weight: 1,0 kg

Controller: Optical encoder or hall effect sensor

Shaft orientation: Left / Right



SWEDEN.MADE.