

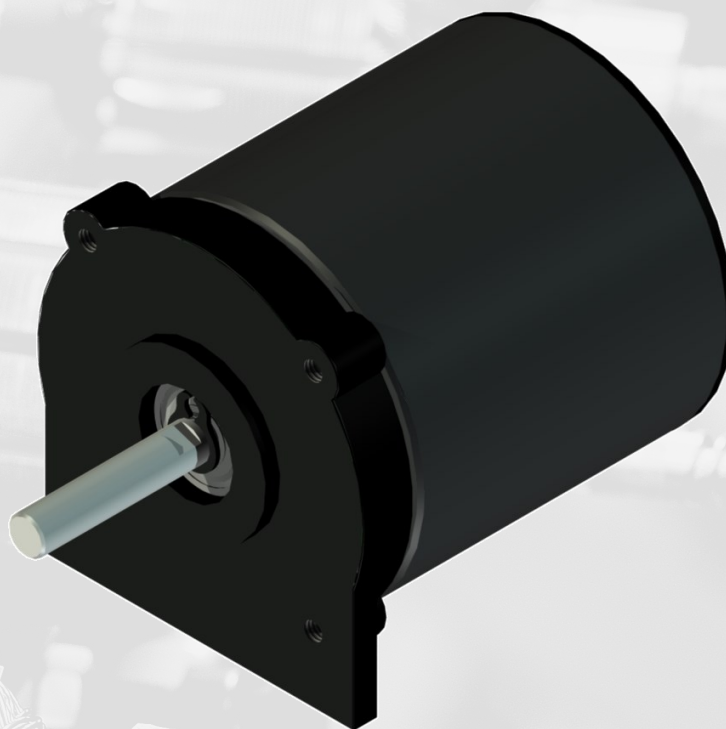
BL3525 OR



Brushless DC Outer Rotor motor

The BL3525 OR motor is available with or without planetary gear transmission. The mounting interface can be customised for your application. A brushless motor offer several advantages such as high efficiency, long lifespan, and reduced maintenance in comparison with brushed motors. In addition, the outer rotor motor delivers a high torque relative to the motor physical size.

There is a wide range of industrial, aerospace and home automation applications such as servodrives, drones and e-bikes.



SWEDEN.MADE.

Specification

Stator diameter: 35 mm

Stator length: 25 mm

Nominal voltage: 12-42 V

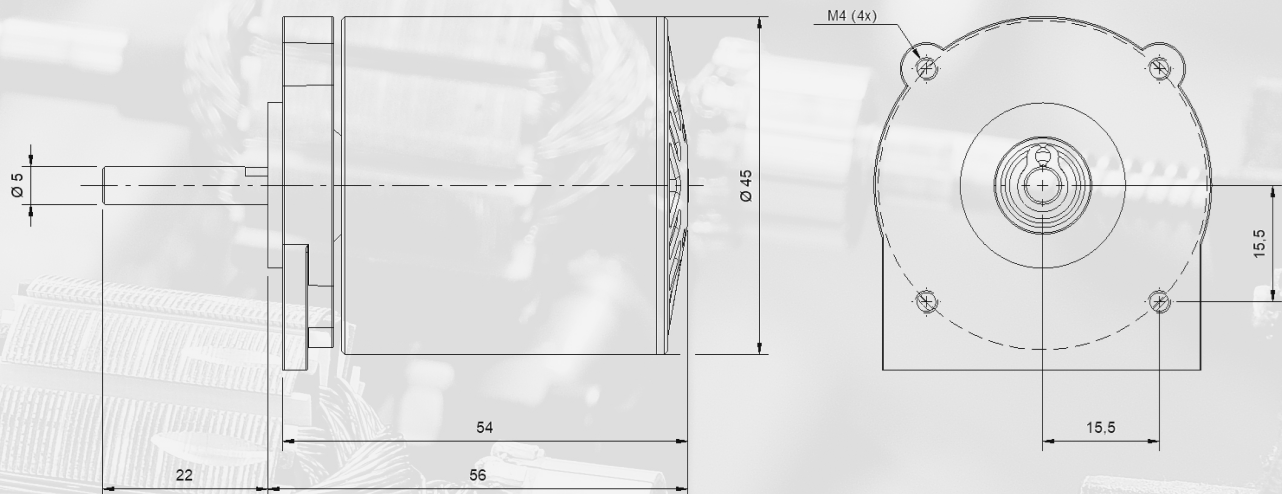
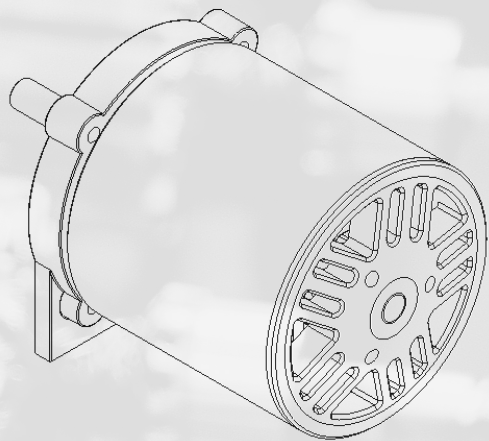
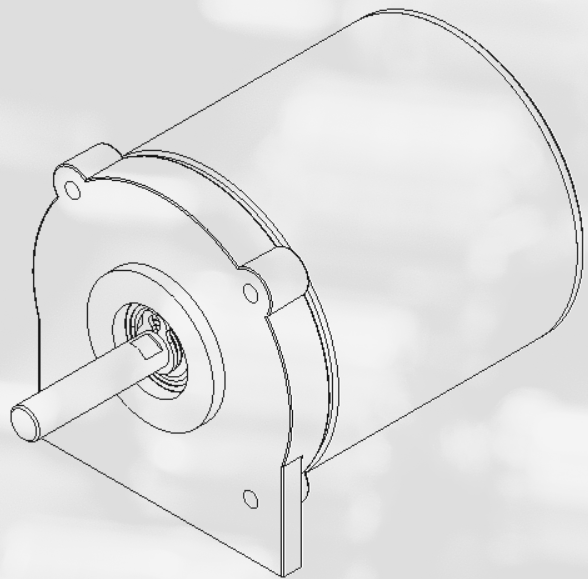
Speed range: 0-6000 rpm

Continuous torque : 0.28 Nm

Max torque: 0,8 Nm

Degree of protection: IP20

Motor weight: 0,31 kg



SWEDEN.MADE.